

Smoke Detector Battery Installation – Visonic MCT-427

What You'll Need

- MCT-427 SMA Smoke Detector
- One CR123A battery

How to Install the Battery

Before proceeding, please be sure that your system is disarmed and in [Test mode](#). Working on devices while the system is armed can generate false alarms.

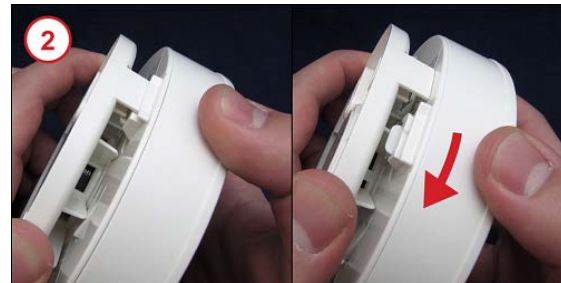
Did You Know? Removing batteries without putting the system in Test mode could trigger an alarm, dispatch police/fire assistance, and may result in a fine for a false alarm.

Is This Your Smoke Detector? Make sure that your Smoke Detector looks like the one in the image. If it does, you have the right document to find out how to install a battery in your Smoke Detector.



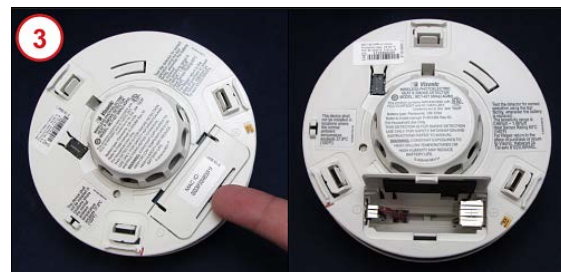
1. Put your system in [Test mode](#).
2. If you have removed the Smoke Detector from the wall/ceiling, turn the Smoke Detector body counterclockwise until the cover tabs are free from the slots holding the Detector in place.

If the device is still attached to the wall/ceiling, hold the top of the Smoke Detector and turn it counterclockwise until it stops. The cover will remain attached once you've pulled the Detector away.



3. Locate the battery compartment cover on the top of the Smoke Detector and use your finger to lift the cover.

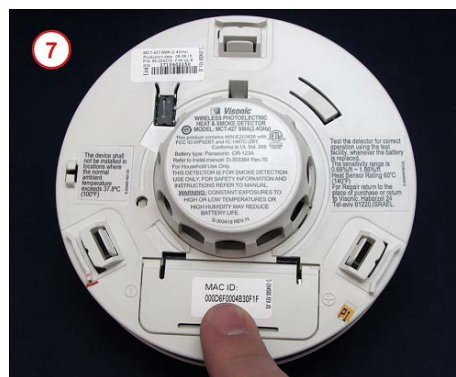
Take a Look. If a battery is already present, remove it by using your fingertip to gently pull one end of the battery up until the battery is loose. Then, you can pull it free from the slot.



4. Place one CR123A battery into the slot with the negative (-) end of the battery on top of the red spring located next to the negative (-) battery placement indicator on the outside of the compartment.
5. Press the positive (+) end of the battery into the slot next to the positive (+) battery placement indicator.



6. When the battery is inserted correctly, the Smoke Detector will emit a short beeping sound.
7. Close the battery compartment cover by pushing it down with your finger until it snaps into place.



8. Align the tabs on the cover with the slots on the body of the Smoke Detector.
9. Turn the cover clockwise until it snaps into place. If you have removed the Smoke Detector from the wall/ceiling, remount the device.



Did You Know? You should take the opportunity to clean the sensor when you have the Smoke Detector removed from its mount. Clean the front and back of the Smoke Detector with a dry or damp (water only) cloth.

Confirm that the low battery alert has resolved and the equipment appears on your list of connected devices.

Need Help? Find these instructions online at <https://www.xfinity.com/support/home-security/installing-battery-mct-427-sma-smoke-detector/>. Get more troubleshooting support at <https://www.xfinity.com/support/gettingstarted/troubleshooting/> or contact a customer service expert at 1-800-XFINITY.

Help Protect Our Environment: Please properly recycle your discarded batteries. For your convenience, batteries are accepted for recycling at various locations. Check www.call2recycle.org or call 1-800-8-Battery (1-800-8-228-8379) to find a recycling location near you.