

# Door / Window Sensor Battery Installation – Visonic MCT-340 SMA

## What You'll Need

- Visonic MCT-340 SMA Door / Window Sensor
- One CR2032 battery
- Double-sided tape (optional)

## How to Install the Battery

**Before proceeding**, please be sure that your system is disarmed. Working on devices while the system is armed can generate false alarms.

**Did You Know?** You may want to have some double-sided tape on hand if you need to remove your Sensor from the wall to install a battery. Cut the tape to size and reattach your Sensor if the existing adhesive fails to hold it in place.

**Is This Your Sensor?** Make sure that your Sensor looks like the one in the image. If it does, you have the right document to find out how to install a battery in your Sensor.

**Did You See?** There is a mark located on the side of the Sensor (see arrow above) that shows the recommended side to use when matching up the Sensor with the magnet. The same mark is found on the magnet for easy alignment.



1. Locate the small horizontal raised lines in the shape of a pyramid on the Sensor.

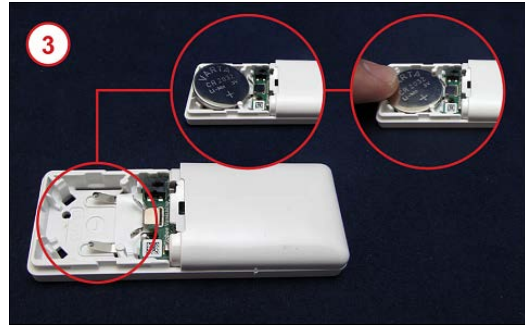


2. Place your thumb or finger on the horizontal lines and push/pull towards the end of the Sensor. The cover will slide down a short distance, allowing you to pull the cover off the Sensor.

**Take a Look.** If a battery is already present, remove it by using your fingertip to gently pull one end of the battery up until the battery is loose and you can pull it free from the slot.



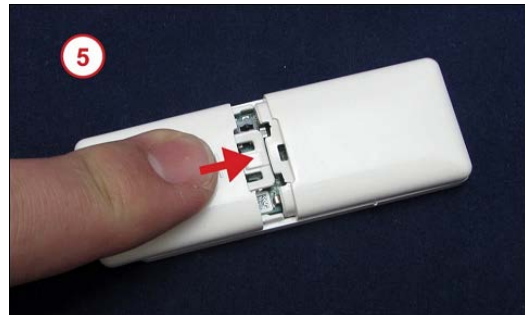
3. Insert the CR2032 battery by placing it flat against the prongs in the battery compartment with the negative (-) side facing down. The battery should fit inside the battery cradle.



4. Align the small tabs on the cover with the slots in the track on the Sensor's body and press the cover down onto the Sensor.



5. Use your thumb or finger to slide the cover towards the other end of the Sensor until it snaps into place.



6. When the battery is inserted correctly and the cover is reattached, the red light on the front of the Sensor will light up.



Confirm that the low battery alert has resolved and the equipment appears on your list of connected devices. You should also ensure that sensor events such as door opening or motion registers as an activity on your system.

**Need Help?** Find these instructions online at <https://www.xfinity.com/support/home-security/installing-battery-mct-340-sma-sensor/>. Get more troubleshooting support at <https://www.xfinity.com/support/gettingstarted/troubleshooting/> or contact a customer service expert at 1-800-XFINITY.

**Help Protect Our Environment:** Please properly recycle your discarded batteries. For your convenience, batteries are accepted for recycling at various locations. Check [www.call2recycle.org](http://www.call2recycle.org) or call 1-800-8-Battery (1-800-8-228-8379) to find a recycling location near you.