

# Door / Window Sensor Battery Installation – Visonic MCT-320 SMA

## What You'll Need

- Visonic MCT-320 SMA Door / Window Sensor
- A flathead screwdriver
- One CR2 battery
- Double-sided tape (optional)

## How to Install the Battery

**Before proceeding**, please be sure that your system is disarmed. Working on devices while the system is armed can generate false alarms.

**Did You Know?** You may want to have some double-sided tape on hand if you need to remove your Sensor from the wall to install a battery. Cut the tape to size and reattach your Sensor if the existing adhesive fails to hold it in place.

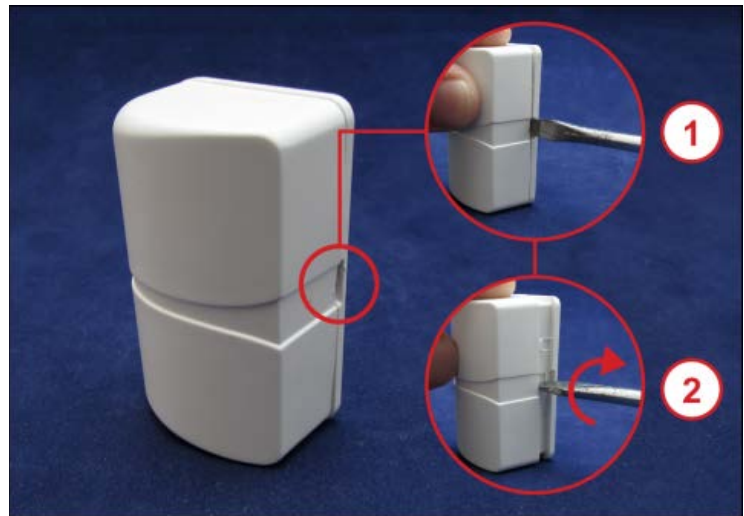
**Is This Your Sensor?** Make sure that your Sensor looks like the one in the image. If it does, you have the right document to find out how to install a battery in your Sensor.



1. Locate the small slot on the right side of the Sensor by following the slim cut-out design on the middle of the Sensor until it becomes wide. The slot is at the end of the wide cut-out next to the magnet indicator.

2. Insert a flathead screwdriver into the slot and gently turn the screwdriver clockwise to pop open one side of the battery cover.

**Did You See?** There is a tab located on the narrow side of the cut-out that shows the location of the magnet for the Sensor (see arrow above). This Sensor only reads the tabbed magnet. If the magnet is not lined up properly after you've replaced the battery, your Sensor won't react to open/closed events.



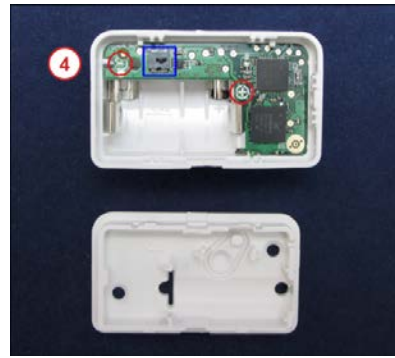
3. Locate the small slot on the opposite side of the Sensor. Insert a flathead screwdriver into the slot and gently turn the screwdriver clockwise to release the cover from the Sensor's body.

**Take a Look.** If a battery is already present, remove it by using your fingertip to gently pull one end of the battery up until the battery is loose and you can pull it free from the slot.

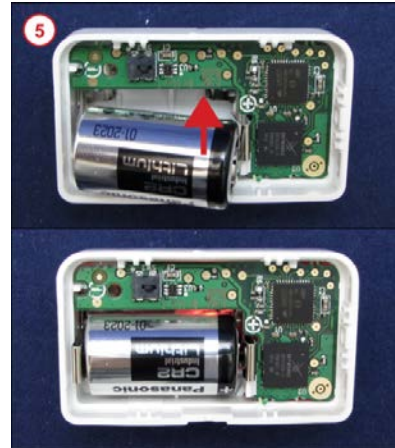


4. Locate the positive (+) and negative (-) battery placement indicators inside the Sensor's body.

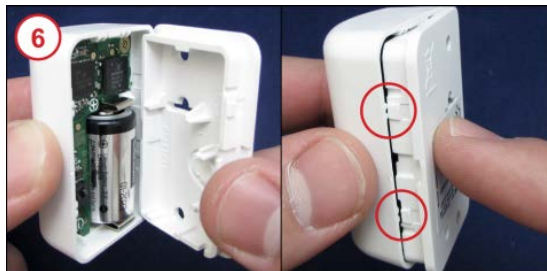
**Did You Know?** Make sure not to press down the tamper (shown below within the blue square) when inserting the battery as this will default the Sensor.



5. Insert one CR2 battery into the slot, matching the positive (+) end of the battery to the positive (+) placement indicator. When the battery is inserted correctly, the red light inside the Sensor will light up.



6. Align the small tabs on the side of the cover with the guides on the Sensor's body then gently push the cover onto the Sensor's body until it snaps into place.



Confirm that the low battery alert has resolved and the equipment appears on your list of connected devices. You should also ensure that sensor events such as door opening or motion registers as an activity on your system.

**Need Help?** Find these instructions online at <https://www.xfinity.com/support/home-security/installing-battery-mct-320-sma-sensor/>. Get more troubleshooting support at <https://www.xfinity.com/support/gettingstarted/troubleshooting/> or contact a customer service expert at 1-800-XFINITY.

**Help Protect Our Environment:** Please properly recycle your discarded batteries. For your convenience, batteries are accepted for recycling at various locations. Check [www.call2recycle.org](http://www.call2recycle.org) or call 1-800-8-Battery (1-800-8-228-8379) to find a recycling location near you.