

Motion Sensor Battery Installation - Visonic CLIP SMA

What You'll Need

- CLIP SMA Motion Sensor
- A Phillips-head screwdriver
- One CR123A battery
- Double-sided tape (optional)

How to Install the Battery

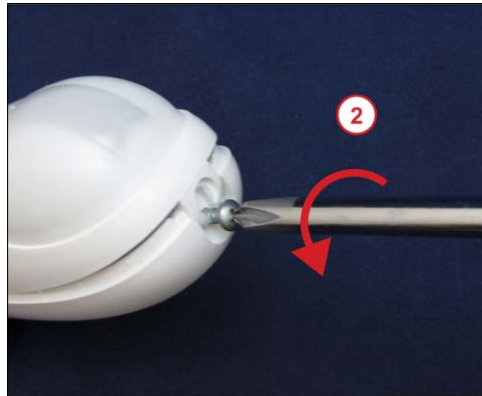
Before proceeding, please be sure that your system is disarmed. Working on devices while the system is armed can generate false alarms.

Did You Know? You may want to have some double-sided tape on hand if you need to remove your Sensor from the wall to install a battery. Cut the tape to size and reattach your Sensor if the existing adhesive fails to hold it in place.

Is This Your Sensor? Make sure that your Sensor looks like the one in the image. If it does, you have the right document to find out how to install a battery in your Sensor.



1. Locate the screw on the top of the Sensor.
2. Using a Phillips-head screwdriver, turn the screw counterclockwise until the cover is loose.



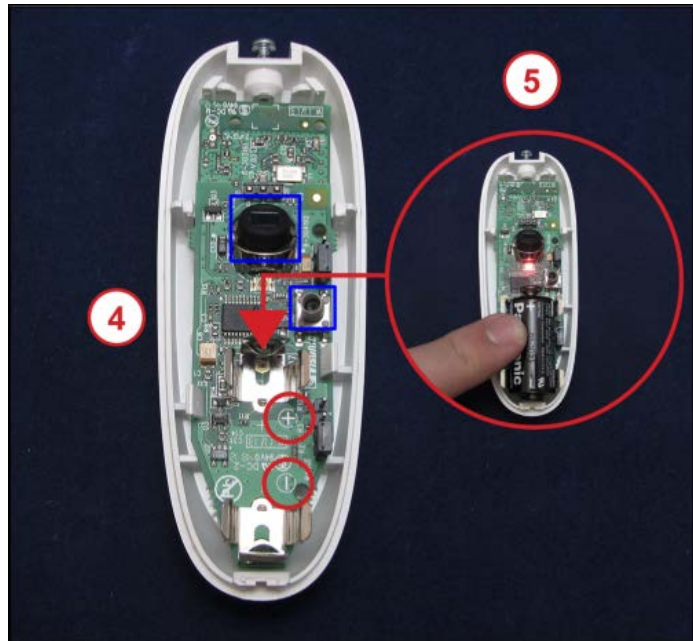
3. Gently pull the top of the cover away from the screw, then pull down to free the bottom tab on the cover from the slot in the bottom of the Sensor. The battery slot is on the circuit board.



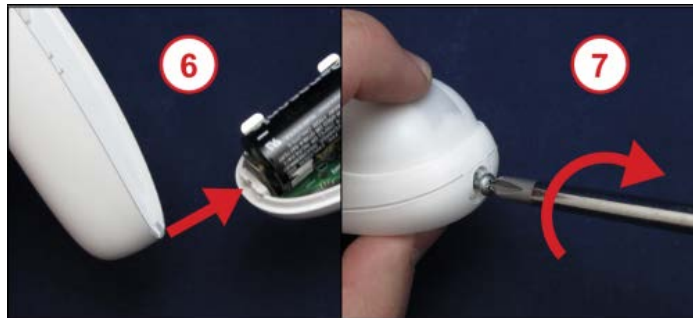
Take a Look. If a battery is already present, remove it by using your fingertip to gently pull one end of the battery up until the battery is loose and you can pull it free from the slot.

4. Install a CR123A battery by aligning the positive (+) and negative (-) ends of the battery with the positive (+) and negative (-) indicators on the circuit board and pressing the battery into the battery clasps.
5. When the battery is inserted correctly, the red light on the circuit board will light up.

Did You Know? The Motion Sensor and tamper are exposed once you remove the cover (shown below within the blue squares). Take care not to touch them. Repeated contact with the Sensor may compromise the functionality of your device and pressing down the tamper will default the Sensor.



6. Slide the tab on the bottom of the cover into the slot at the bottom of the Motion Sensor.
7. Press and hold the top of the cover against the Sensor's body and use a Phillips-head screwdriver to turn the screw clockwise until tight.



Confirm that the low battery alert has resolved and the equipment appears on your list of connected devices. You should also ensure that sensor events such as door opening or motion registers as an activity on your system.

Need Help? Find these instructions online at <https://customer.xfinity.com/help-and-support/home-security/installing-battery-clip-sma-motion-sensor>. Get more troubleshooting support at <https://www.xfinity.com/support/gettingstarted/troubleshooting/> or contact a customer service expert at 1-800-XFINITY.

Help Protect Our Environment: Please properly recycle your discarded batteries. For your convenience, batteries are accepted for recycling at various locations. Check www.call2recycle.org or call 1-800-8-Battery (1-800-8-228-8379) to find a recycling location near you.