

Motion Sensor Battery Installation – Tyco XHS1-TY

What You'll Need

- Tyco XHS1-TY Motion Sensor
- Two CR123A batteries
- Double-sided tape (optional)

How to Install the Batteries

Before proceeding, please be sure that your system is disarmed. Working on devices while the system is armed can generate false alarms.

Did You Know? You may want to have some double-sided tape on hand if you need to remove your Sensor from the wall to install a battery. Cut the tape to size and reattach your Sensor if the existing adhesive fails to hold it in place.

Is This Your Motion Sensor? Make sure that your Motion Sensor looks like the one in the image. If it does, you have the right document to find out how to install a battery in your Motion Sensor.



1. Grasp the small tab on the front of the motion sensor, and pull up to slide it off the back cover.

Take a Look. If batteries are already present, remove them by gently using your fingertip to pull one end of the battery up until the battery is loose and you can pull it free from the slot.

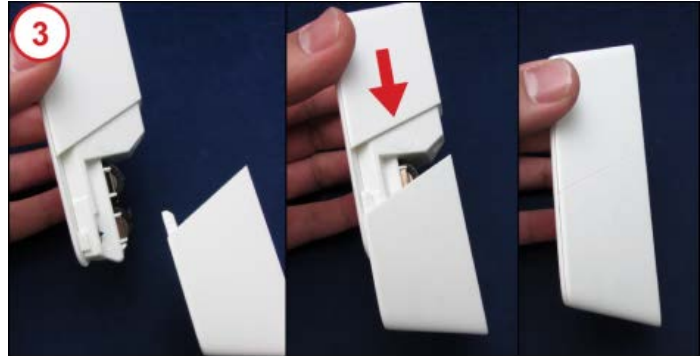


2. The battery compartment contains a diagram of the proper battery position with a symbol indicating which way the positive (+) end of the battery should be facing.

Insert two CR-123A batteries into the battery slots positioning the positive (+) end of the batteries as shown in the battery diagram.



3. Reposition the guides on either side of the motion sensor with the track on the back cover. Slide the motion sensor down over the back cover until it snaps closed.



4. When the batteries are inserted correctly, the red indicator light on the front of the sensor will illuminate.



Confirm that the low battery alert has been resolved and the equipment appears on your list of connected devices. You should also ensure that sensor events such as door opening or motion registers as an activity on your system.

Need Help? Find these instructions online at

<https://www.xfinity.com/support/home-security/installing-battery-xhs1-ty-motion-sensor/>. Get more troubleshooting support at <https://www.xfinity.com/support/gettingstarted/troubleshooting/> or contact a customer service expert at 1-800-XFINITY.

Help Protect Our Environment: Please properly recycle your discarded batteries. For your convenience, batteries are accepted for recycling at various locations. Check www.call2recycle.org or call 1-800-8-Battery (1-800-8-228-8379) to find a recycling location near you.