

Motion Sensor Battery Installation –

SMC SMCMT01-Z SMC SMCMT03-Z

What You'll Need

- SMC SMCMT01-Z or SMC SMCMT03-Z Motion Sensor
- A flathead screwdriver
- Three CR123A batteries
- Double-sided tape (optional)

How to Install the Batteries

Before proceeding, please be sure that your system is disarmed. Working on devices while the system is armed can generate false alarms.

Did You Know? You may want to have some double-sided tape on hand if you need to remove your Sensor from the wall to install a battery. Cut the tape to size and reattach your Sensor if the existing adhesive fails to hold it in place.

Is This Your Sensor? Make sure that your Sensor looks like the one in the image. If it does, you have the right document to find out how to install a battery in your Sensor.



1. Locate the small tabs on the bottom of the Motion Sensor.
2. Insert a flathead screwdriver between the tabs and gently pry the cover upwards. The cover will separate slightly from the Sensor's body.



3. Pull the Sensor's body down and away to release the cover completely.

Take a Look. If a battery is already present, remove it by using your fingertip to gently pull one end of the battery up until the battery is loose and you can pull it free from the slot.

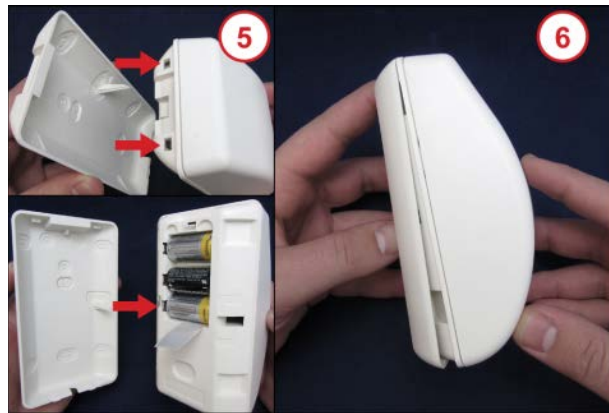


4. The battery compartment contains a diagram of the proper battery position with a symbol indicating which way the positive (+) end of the battery should be facing.

Insert the three CR123A batteries into the battery slots, positioning the positive (+) ends of the batteries as shown in the battery diagram.



5. Align the small tabs inside the top of the cover with the matching slots on the Sensor body. When aligned, the prong on the cover will match up with the hole on the right side of the Motion Sensor.
6. Press the Sensor body's against the cover until the bottom tabs snap into place.



7. When the batteries have been inserted and the cover is reattached correctly, the red indicator light on the front of the Motion Sensor will illuminate.



Confirm that the low battery alert has been resolved and the equipment appears on your list of connected devices. You should also ensure that sensor events such as door opening or motion registers as an activity on your system.

Need Help? Find these instructions online at

<https://customer.xfinity.com/help-and-support/home-security/installing-battery-smcmt01-z-motion-sensor/> or <https://customer.xfinity.com/help-and-support/home-security/installing-battery-smcmt03-z-motion-sensor/>. Get more troubleshooting support at <https://www.xfinity.com/support/gettingstarted/troubleshooting/> or contact a customer service expert at 1-800-XFINITY.

Help Protect Our Environment: Please properly recycle your discarded batteries. For your convenience, batteries are accepted for recycling at various locations. Check www.call2recycle.org or call 1-800-8-Battery (1-800-8-228-8379) to find a recycling location near you.