

Glass Break Sensor Battery Installation – SMC SMCGB01-Z

What You'll Need

- SMC SMCGB01-Z Glass Break Sensor
- One CR123 battery
- Double-sided tape (optional)

How to Install the Battery

Before proceeding, please be sure that your system is disarmed. Working on devices while the system is armed can generate false alarms.

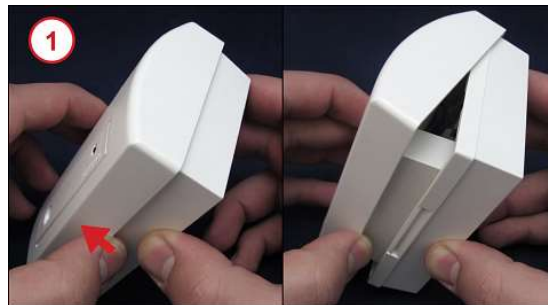
Did You Know? You may want to have some double-sided tape on hand if you need to remove your Sensor from the wall to install a battery. Cut the tape to size and reattach your Sensor if the existing adhesive fails to hold it in place.

Is This Your Sensor? Make sure that your Glass Break Sensor looks like the one in the image. If it does, you have the right document to find out how to install a battery in your Glass Break Sensor.



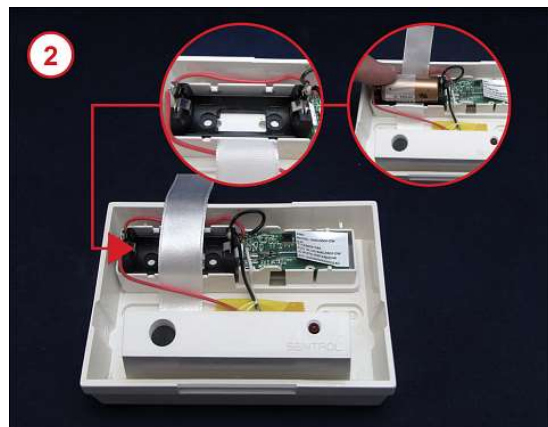
1. Hold the Glass Break Sensor with both hands and use your thumb to pull the cover away from the Sensor body.

Take a Look. If a battery is already present, remove it by gently pulling the end of the ribbon up until the battery is loose and you can pull it free from the battery slot.



2. The battery compartment contains a diagram of the proper battery position with a symbol indicating which way the positive (+) end of the battery should be facing.

Insert one CR123 battery over the ribbon in the battery slot, positioning the positive (+) end of the battery as shown in the battery diagram.



3. Align the bottom of the cover with the bottom of the Sensor's body, then push the top of the cover towards the top of the Sensor's body until the cover snaps into place. The Sensor should resume normal operation.



Confirm that the low battery alert has resolved and the equipment appears on your list of connected devices

Need Help? Find these instructions online at <https://www.xfinity.com/support/home-security/installing-battery-smcgb01-z-glass-break/>. Get more troubleshooting support at <https://www.xfinity.com/support/gettingstarted/troubleshooting/> or contact a customer service expert at 1-800-XFINITY.

Help Protect Our Environment: Please properly recycle your discarded batteries. For your convenience, batteries are accepted for recycling at various locations. Check www.call2recycle.org or call 1-800-8-Battery (1-800-8-228-8379) to find a recycling location near you.