



 **OUTDOOR**
MOTION LIGHT
AS EASY AS SCREWING IN A LIGHTBULB

OUTDOOR MOTION LIGHT

The Outdoor Motion Light stands alone as an advanced solution in the realm of home improvement and security. Offering a competitively high 6000 lumen count, expansive coverage, and superior adaptability and customization, this motion-activated flood light ensures unparalleled visibility and is as easy to install as screwing in a light bulb.

- EXPANSIVE 180° BEAM ANGLE
- RETROFIT, TOOL-FREE INSTALLATION WITH PATENTED EASY SCREW SYSTEM
- MAXIMUM BEAM DISTANCE OF 200 FT
- ADJUSTABLE DUAL MOTION SENSORS WITH 360° OF DETECTION
- USB-A POWER OUTPUT FOR SECURITY CAMERAS



HOME PROTECTION AS EASY AS SCREWING IN A LIGHTBULB





RETROFIT INSTALLATION

"EASY SCREW" LOCK RING SYSTEM

ALLOWS LED HEAD TO REMAIN STATIONARY WHILE SCREWING LIGHT INTO FLOOD SOCKET

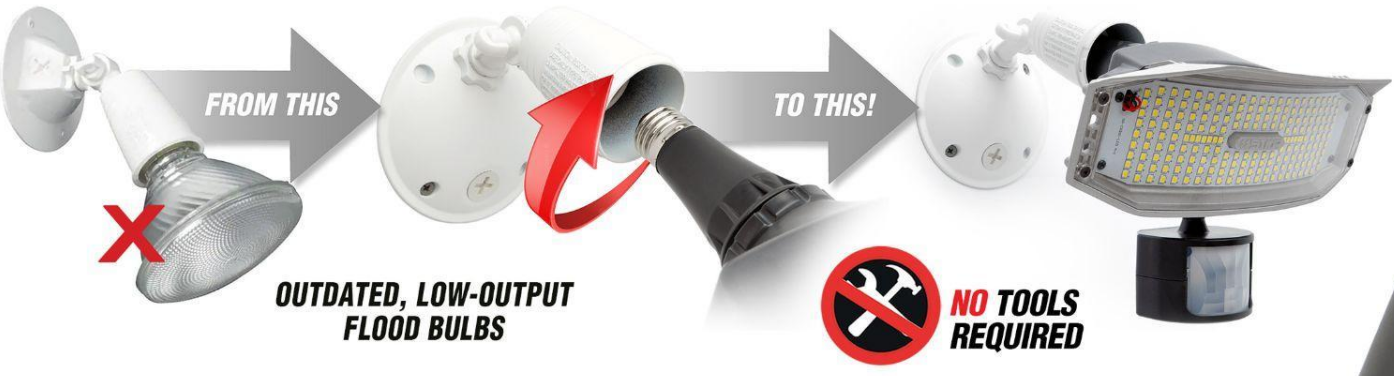


PATENTED "EASY SCREW" LOCK RING

Many homes are equipped with outdated outdoor security lights, featuring dim bulbs, high electricity consumption, and no motion or light sensors. Traditional options for upgrades involve complex rewiring and specialty tools, STKR Concepts recognized the need for a simpler solution. The Outdoor Motion Security Light screws directly into most existing outdoor security flood light fixtures. Its patented **Easy Screw System** ensures easy, tool-free installation even in tight spaces or eaves, allowing precise mounting and sensor positioning.

RETROFIT BULB END
SCREW THE LIGHT RIGHT INTO EXISTING FLOOD LIGHT SOCKETS
NO TOOLS - NO WIRING!

HOME PROTECTION AS EASY AS SCREWING IN A LIGHTBULB



6000 LUMENS



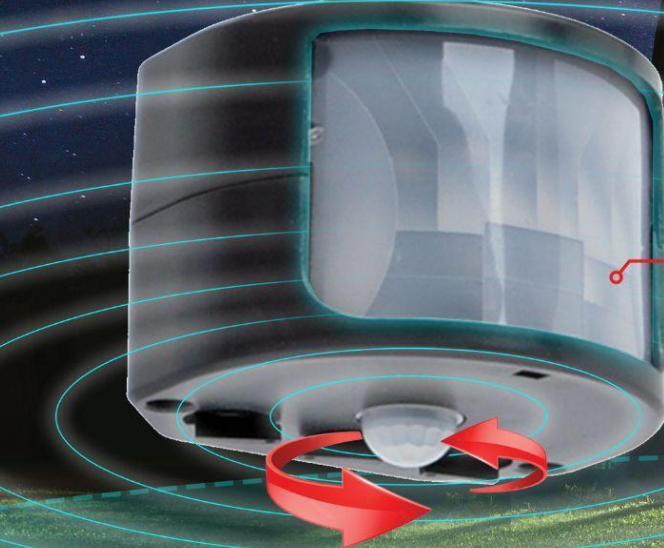
DUAL MOTION SENSORS

◀ PRIMARY WIDE-ANGLE FRONT-FACING SENSOR

◀ SECONDARY 360° DOME SENSOR

◀ 360° MOTION DETECTION RANGE UP TO 90 FT

◀ COMPREHENSIVE SURVEILLANCE & RAPID MOTION DETECTION RESPONSE



360° MOTION DETECTION UP TO 90 FT

WIDE ANGLE PRIMARY MOTION SENSOR

360° SECONDARY MOTION SENSOR

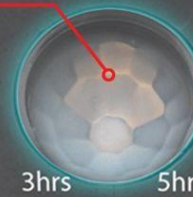
USB
FOR SECURITY CAMERA
(CAMERA NOT INCLUDED)



360°
ADJUSTABLE MOTION SENSOR

MOTION SENSOR
TIMER

1min 5min



3hrs 5hrs

MOTION SENSOR
RANGE

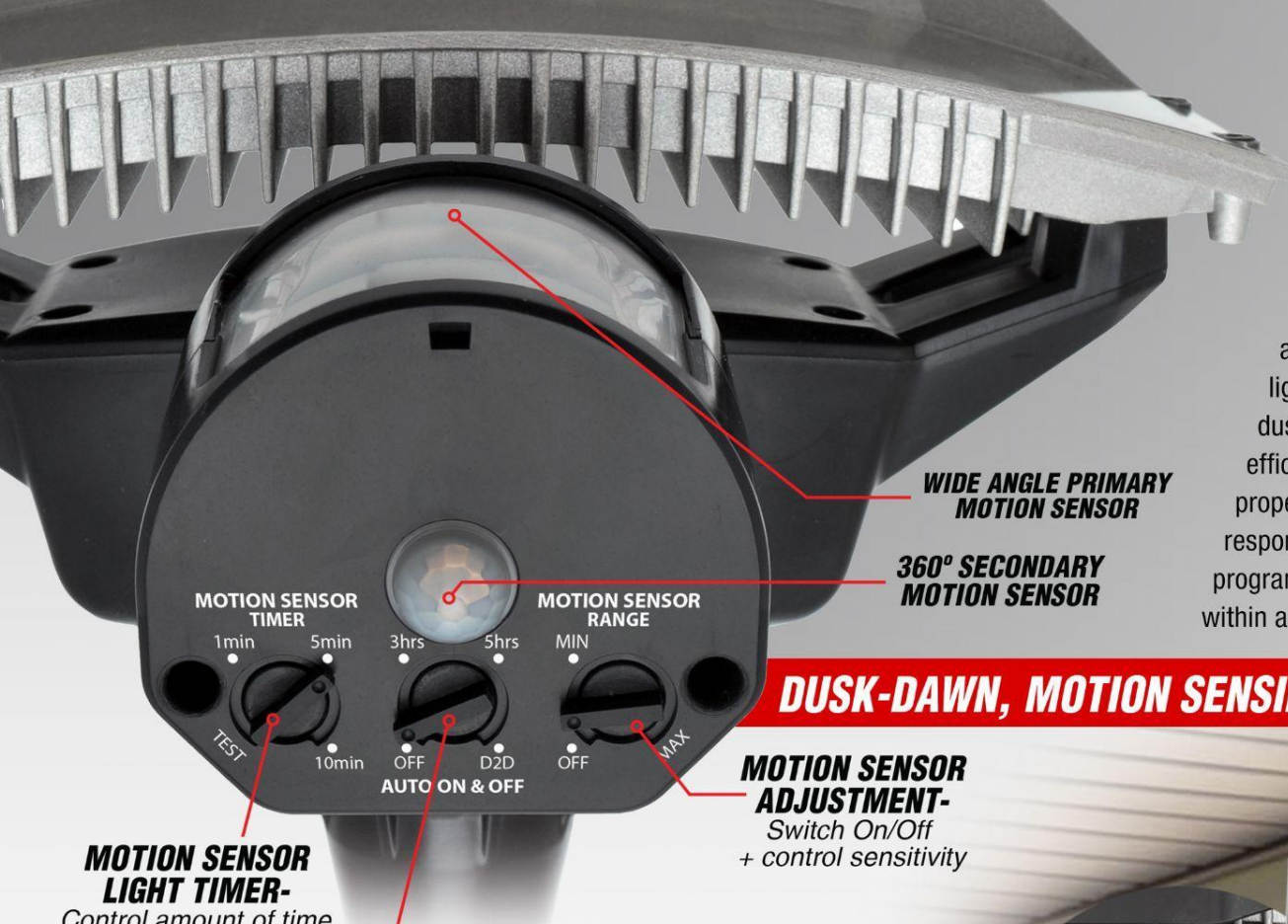
MIN

MAX



FULLY CUSTOMIZABLE

The Outdoor Motion Light offers an impressive array of customization settings, affording users unparalleled control over their lighting preferences and security needs. With built-in light sensors, the light can be configured to activate automatically at dusk and deactivate at dawn, ensuring optimal energy efficiency and effortless maintenance of your property's illumination. Alternatively, for a more responsive security approach, the light can be programmed to activate solely upon detecting motion within a generous 90-foot radius.



WIDE ANGLE PRIMARY MOTION SENSOR

360° SECONDARY MOTION SENSOR

DUSK-DAWN, MOTION SENSING, & EVERYTHING IN-BETWEEN

MOTION SENSOR TIMER

1min 5min 3hrs 5hrs 10min

MOTION SENSOR RANGE

MIN OFF MAX

TEST

OFF D2D AUTO ON & OFF

MOTION SENSOR ADJUSTMENT-
Switch On/Off + control sensitivity

AUTO ON/OFF TIMER-
Control amount of time light remains on after dusk

MOTION SENSOR LIGHT TIMER-
Control amount of time light remains on after motion is detected



USB-A POWER SOURCE - POWER SECURITY CAMERAS



ADJUSTABLE MOTION SENSOR



USB FOR SECURITY CAMERA

(CAMERA NOT INCLUDED)

USB POWER OUT (POWER SECURITY CAMERA)

(CAMERA NOT INCLUDED)



RETAIL PACKAGING



OUTDOOR
MOTION LIGHT