



## DCM-12800-G24 12V 550CA AGM

Rechargeable Sealed Lead Acid Battery  
DCM – Deep Cycle Marine Series

### \*PRELIMINARY DATASHEET\*

### FEATURES

- Absorbent Glass Mat (AGM) technology for superior performance
- Valve regulated, maintenance free spill proof construction
- Power/volume ratio yielding excellent energy density
- Rugged vibration and impact resistant ABS case and cover
- Gas recombination technology
- 5 year design life
- Special additives in the acid paste ensure excellent performance in deep discharge situations
- Excellent power to volume ratio yielding high energy density

### DEEP CYCLE MARINE SERIES

The Power Sonic DCM series of deep cycle marine batteries provide enhanced performance and excellent reliability in long duration cycling applications. Purpose built for marine applications that require regular and consistent cycling (charge and discharge), this deep cycle battery series offer an exceptionally long cycle life making them the ideal choice for

#### GLOBAL HEADQUARTERS (USA AND INTERNATIONAL EXCLUDING EMEA)

**Power-Sonic Corporation**  
365 Cabela Dr Suite 300,  
Verdi, Nevada 89439  
USA  
T: +1 775 824 6500  
E: customer-service@power-sonic.com

#### POWER-SONIC EMEA (EMEA – EUROPE, MIDDLE EAST AND AFRICA)

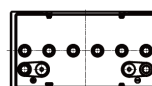
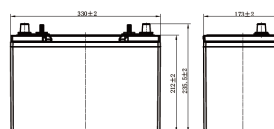
Smitspol 4, 3861 RS Nijkerk,  
The Netherlands  
T NL: +31 33 7410 700  
T UK: +44 1268 560 686  
T FR: +33 344 32 18 17  
E: salesEMEA@power-sonic.com

\*PLEASE CONTACT POWER-SONIC TO CONNECT MORE THAN FOUR BATTERIES.  
To ensure safe and efficient operation always refer to the latest edition of our Technical Manual, as published on our website.  
© 2019, Power-Sonic Corporation. All rights reserved. All trademarks are the property of their respective owners.  
All data subject to change without notice. E&O.E

### PERFORMANCE SPECIFICATIONS

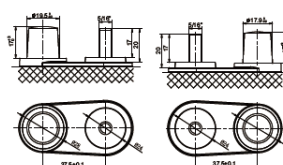
Nominal Voltage	12 V
Nominal Capacity	79 AH @ 20 HR
Reserve Capacity	150 Minutes
<b>Dimensions</b>	
Length (+/-2mm)	10.2" (260mm)
Width (+/-2mm)	6.6" (168mm)
Height (+/-4mm)	8.2" (208mm)
Height with Terminal (+/-4mm)	9.2" (233mm)
Minimum Weight	23.0 Kg
Internal Resistance	TBD mOhm
Continuous Cold Cranking	550 CCA
Charge Cut-off Voltage	14.7 V
Recommended Charge Current	7.9 A - 19.8 A
Recommended Discharge Cut-Off Voltage	10.5 V
Cycle Charge (Initial Current ≤ 0.25C)	13.8 V – 14.4 V
Design Life	5 Years
Series Connection	Up to Four*
Parallel Connection	Up to Four*
Operating Temperature Charge	-4°F (-15°C) to 104°F (40°C)
Discharge	5°F (-15°C) to 122°F (50°C)
Case	ABS

### DIMENSIONS



### TERMINALS:

#### SAE: Dual Terminal

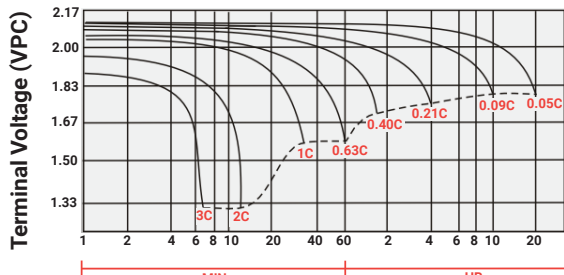


POS

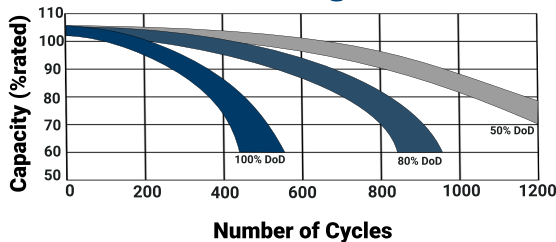
NEG



## Discharge Characteristics



## CYCLE LIFE @25°C



## CHARGING

**Cycle Applications:** Apply constant voltage charge at 2.35 – 2.45 volts per cell at 20°C. Initial charging current should be set at less than C/5 Amps. Switch to float charge to avoid overcharging.

**“Float” or “Stand-By” Service:** Apply constant voltage charge of 2.25 – 2.30 volts per cell at 20°C. When held at this voltage, the battery will seek its own current level and maintain itself in a fully charged condition.

## APPLICATION

- Marine
- RV
- SLI
- OHV
- Deep Cycle
- Trolling

### GLOBAL HEADQUARTERS (USA AND INTERNATIONAL EXCLUDING EMEA)

Power-Sonic Corporation  
365 Cabela Dr Suite 300,  
Verdi, Nevada 89439 USA  
T: +1 619 661 2020  
E: customer-service@power-sonic.com

### POWER-SONIC EMEA (EMEA – EUROPE, MIDDLE EAST AND AFRICA)

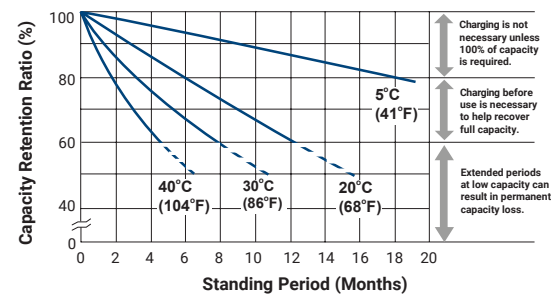
Smitspol 4, 3861 RS Nijkerk,  
The Netherlands  
T NL: + 31 33 7410 700  
T UK: + 44 1268 560 686  
T FR: + 33 344 32 18 17  
E: salesEMEA@power-sonic.com

# DCM-12800-G24

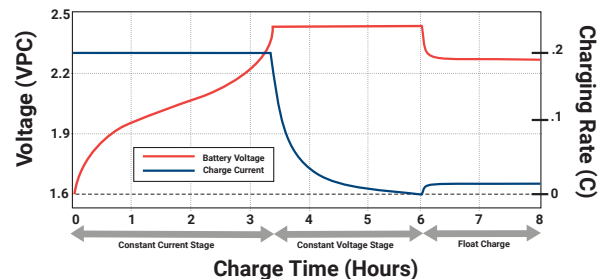
12V 550CA  
AGM

Rechargeable Sealed Lead Acid Battery  
DCM – Deep Cycle Marine Series

## CAPACITY RETENTION



## CHARGING CHARACTERISTICS @ C/5 AND 25°C



## APPROVALS



- Approved for transport by air. D.O.T., I.A.T.A., F.A.A. and C.A.B. certified
- ISO9001:2015 - Quality management systems

## FURTHER INFORMATION

Please refer to our website [www.power-sonic.com](http://www.power-sonic.com) or email us at [technical-support@power-sonic.com](mailto:technical-support@power-sonic.com) for a complete range of useful downloads such as product catalogs, material safety data sheets (MSDS), ISO certification, etc.