





OLIGHT L-DOCK INSTALLATION GUIDE

IN THE BOX

| | | | | | | | | | |
|--|---|---|---|------|------------------------------|-----|------|-------------------------|-----|
|  |  |  |  | ITEM | PART NAME | QTY | ITEM | PART NAME | QTY |
| 1 | 2 | 3 | 4 | 1 | L-dock | 1 | 5 | Plastic Expansion Bolts | 2 |
| | | | | 2 | USB Magnetic Charging Cable | 1 | 6 | Screws | 2 |
| | | | | 3 | Microfiber Cleaning Cloth | 1 | 7 | Round Silicone | 2 |
| | | | | 4 | Self-Adhesive Ply-Yarn Drill | 2 | / | / | / |

INSTALLATION

Manufacturer recommendation: Install on a flat and high-density surface, mounted in the shape of an inverted "L". When charging, the flashlight and L-Dock should be setup away from high traffic areas in order to avoid being knocked loose and damaging the light or L-dock.

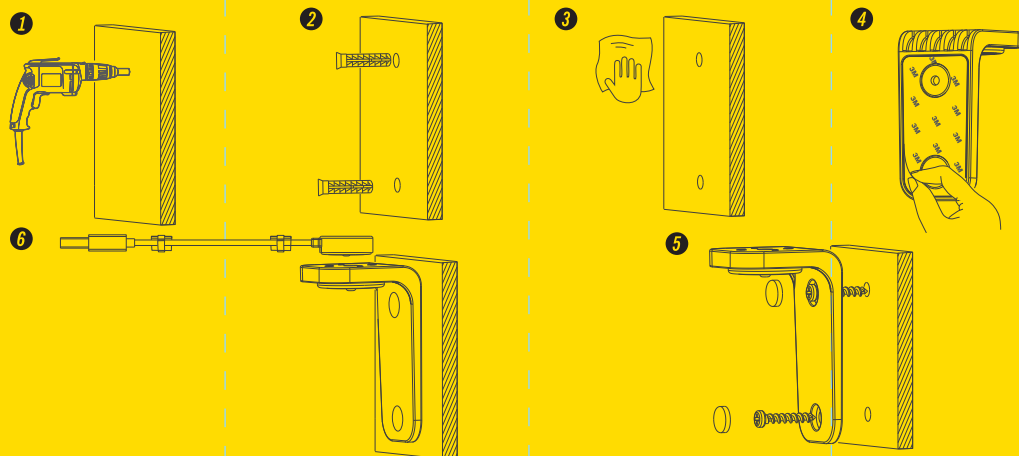
The included MCC is 1.2 meters long to allow for easier mounting locations near a power source.

TOOLS: Phillips head screwdriver, drill (6mm head diameter), hammer.

NOTE: 1. The drill and hammer are only used on cement or a ceramic tile wall. If you install it on wood surface, please skip the 1, 2 steps.

2. The 3M tape on the back of L-dock is just for auxiliary installation, can not be used for a long time.

INSTALLATION STEPS



DANGER

1. DO NOT drill holes in the area where electrical cables may be behind. This may result in damage to the wiring, electric shock or the risk of injury or even death.
2. DO NOT directly attach the L-dock to the wall with 3M tape. Its adhesive strength is not powerful enough to last for a long time, the product may fall down after a period of time.
3. DO NOT install in places that are above fragile objects or surfaces, heavy objects, or people and pets. If it is mounted or used carelessly, the flashlight may fall off magnetic base and cause damage or injury.
4. DO NOT install in flammable and explosive places, such as oil stations, gas stations, mining sites, dust or metal workshops.
5. Keep out of reach of children.

NOTICE

1. Not suitable for bumpy environments, such as in a car.

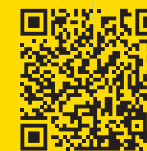
WARRANTY

WITHIN 30 DAYS OF PURCHASE: Contact the original seller for repair or replacement.

WITHIN ONE YEAR OF PURCHASE: Contact Olight for repair or replacement.

This warranty does not cover normal wear and tear, modifications, misuse, disintegrations, negligence, accidents, improper maintenance, or repair by anyone other than an Authorized retailer or Olight itself.

EU-DECLARATION OF CONFORMITY



EU-Declaration of Conformity can be found here CE:
<https://olightworld.com/ec-declaration>

USA Customer Support

cs@olightstore.com

Global Customer Support

Customer-service@olightworld.com

Visit www.olightworld.com to see our complete product line of portable illumination tools.



Olight Technology Co., Limited

5th Floor, Building A2, Fuhai Information Harbor, Fuhai
Subdistrict, Bao'an District, Shenzhen, China 518103
Made In China

3.0032.6010.9001

V2. 04. 21. 2019