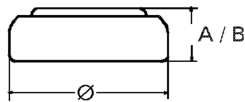


## Data Sheet

**Type Number** ..... 20390  
**Designation IEC** ..... SR1130SW (SR54)  
**System** ..... Silver oxide / Zinc /  
 NaOH - Electrolyte



**Nominal Voltage** ..... 1,55 V  
**Typical Capacity C** ..... 60 mAh  
 Load 5.6 kOhm, at 20°C down to 1.2 V

**Weight (approx.)** ..... 1,32 g  
**Volume** ..... 0,28 ccm  
**Coding**..... Date of Manufacturing  
 Month / Year

<b>Temperature Ranges</b>	min	max.
Storage .....	-10°C	65°C
Discharge .....	-10°C	65°C

<b>Dimensions</b>	min	max.
Diameter (Ø) .....	11,25	11,60
Height (A/B) .....	2,75	3,05

**Segment** ..... Watch  
**Main Applications** ..... Watch  
 Photo  
 Electronic

**Typical Capacities (at 20°C)**

Discharge Type	Load	End Voltage:	1.2 V
Continuous 24h/d,7d/w Current [µA]:	5600 Ω	Time:	218 h
	275	Capacity [mAh]:	60
		Energy [mWh]:	92