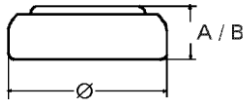


## Data Sheet

**Type Number** ..... 20329  
**Designation IEC** ..... SR 731 SW  
**System** ..... Silver oxide / Zinc / NaOH



**Nominal Voltage** ..... 1,55 V  
**Typical Capacity C** ..... 37 mAh  
 Load 22 kOhm, at 20°C down to 1.2 V

**Weight (approx.)** ..... 0,6 g  
**Volume** ..... 0,15 ccm  
**Coding**..... Date of Manufacturing  
 Month / Year

**Temperature Ranges** ..... min ..... max.  
 Storage ..... -10°C ..... 60°C  
 Discharge ..... -10°C ..... 60°C

**Dimensions** ..... min ..... max.  
 Diameter (Ø)..... 7,75 ..... 7,9  
 Height (A/B) ..... 2,85 ..... 3,1

**Segment** ..... Watch

**Main Applications** ..... Watch  
 Photo  
 Electronic

**Typical Capacities (at 20°C)**

Discharge Type	Load	End Voltage:	1.2 V
Continuous 24h/d,7d/	22000 Ω	Time:	470 h