

Door Lock Battery Installation – Kwikset SmartCode 914

What You'll Need

- Kwikset SmartCode 914 Lock
- Allen wrench
- Four non-rechargeable AA batteries

How to Install the Batteries

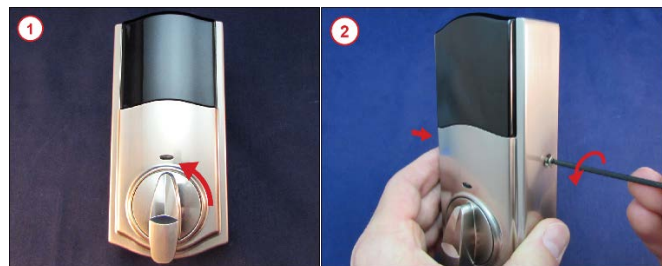
Before proceeding, please be sure that your system is disarmed. Working on devices while the system is armed can generate false alarms.

Did You Know? Removing batteries without putting the system in Test mode could trigger an alarm, dispatch police/fire assistance, and may result in a fine for a false alarm.

Is This Your Door Lock? Make sure that your Door Lock looks like the one in the image. If it does, you have the right document to find out how to install a battery in your Door Lock.



1. Move the turn bolt on the interior lock face to the vertical position.
2. Insert an Allen wrench, with ball tip, into the screw on the left side of the battery cover and turn counter-clockwise to loosen and remove the screw. Repeat this step for the screws on the right side and bottom of the battery cover.



3. Remove the battery cover by pulling it straight out from the lock body.



4. Pull the battery pack up and out of the lock body.

Take a Look. If batteries are already present, remove them by gently using your fingertip to pull one end of the battery up until the battery is loose and you can pull it free from the slot.



5. The battery compartment contains a diagram of the proper battery position with a symbol indicating which way the positive (+) end of the battery should be facing.

Insert four non-rechargeable AA batteries into the battery slots in the battery pack, position the positive (+) end of the batteries as shown in the battery diagram.



6. Hold the battery pack over the interior lock body with the arrows on the top facing the door. Press and hold the LOCK button at the top of the exterior lock face while sliding the battery pack down into the lock body.

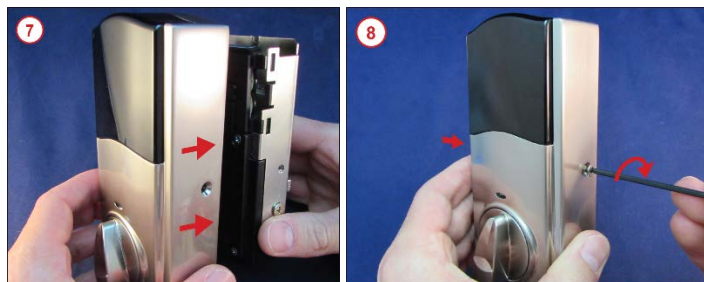
When the battery pack is placed, the latch bolt retracts halfway and then extends back into place. Release the LOCK button after the latch bolt extends back into place.

If lock tones are enabled, a loud beep sounds after the latch bolt extends and two more sound when the lock button is released.



7. Align the battery cover with the front of the interior lock face and move it toward the door until it covers the lock body.

8. Secure the battery cover to the interior lock body by inserting the screws back into the sides and bottom of the battery cover and turning them clockwise to tighten them in place.



9. When the batteries are inserted correctly, the LED light above the turn bolt on the interior lock face will flash.



Confirm that the low battery alert has resolved and the equipment appears on your list of connected devices.

Need Help? Find these instructions online at <https://www.xfinity.com/support/home-security/installing-batteries-kwikset-914-lock/>. Get more troubleshooting support at <https://www.xfinity.com/support/gettingstarted/troubleshooting/> or contact a customer service expert at 1-800-XFINITY.

Help Protect Our Environment: Please properly recycle your discarded batteries. For your convenience, batteries are accepted for recycling at various locations. Check www.call2recycle.org or call 1-800-8-Battery (1-800-8-228-8379) to find a recycling location near you.